



>> forum

TT Forum

Probably the best TT Forum in the web ;-)

You have no new messages

The time now is 01 Jul 2004 17:17

You last visited on 01 Jul 2004 15:55

Home FAQ Search Memberlist Usergroups Calendar Profile Log out [Wak]

Installation Procedure of R32 Aluminium Paddles!!!

Goto page 1, 2, 3 [Next](#)

new thread

post reply

[TT Forum Forum Index -> UK TT Forum](#)

[View previous topic](#) :: [View next topic](#)

Author

Message

Marc_in_the_US

TT Forum Member



Joined: 08 Aug 2003
 Posts: 129
 Location: San Francisco,
 California
 Usergroups:

Posted: 25 Feb 2004 04:38 Post subject: Installation Procedure of R32 Aluminium Paddles!!!

quote

This is it folks, we finally have a documented and well-proven method of swapping the smaller, black, pastic paddles in the TT V6 for the larger, shiny aluminum paddles "stolen" from the VW Golf R32.

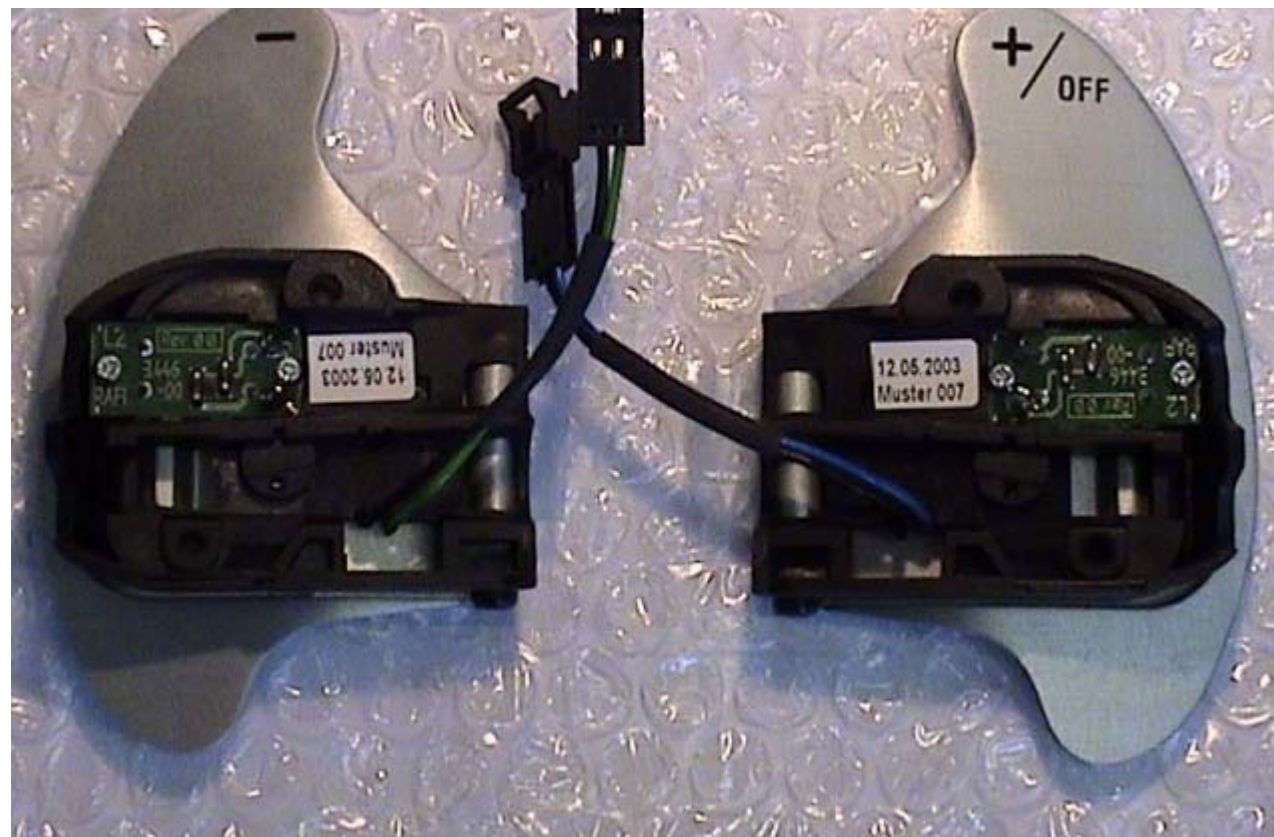
First let me give a huge thanks to Philippe from France, who managed to get us the paddles from his Audi contact at a reasonable price, and for shipping them to us all over the world ;D Also thanks to Philippe, Dean and ANT for taking pictures of the paddles - special thumbs up to Dean for doing so while changing yours, cheers mate!!

So here it is finally: a fully-pictured and documented procedure of the swap.

First, here are a few pictures of the new aluminium paddles to explain what needs to be done in order to take them apart:

1. Here are the paddles themselves, unpacked:





2. Zoom-in on the right paddle:





3. Here, the left arrow points at the Torx screw which also acts as a "pivot", and the right arrow points at the "lip" by which the paddles stay within short distance of the switch:





4. The paddles ship with a protective layer of some sort, you can take it off now or leave it on (as Dean did ;D):





5. Use a Torx screwdriver to take the only screw all the way out:





6. Hold the paddle steady as the spring will push it out further:



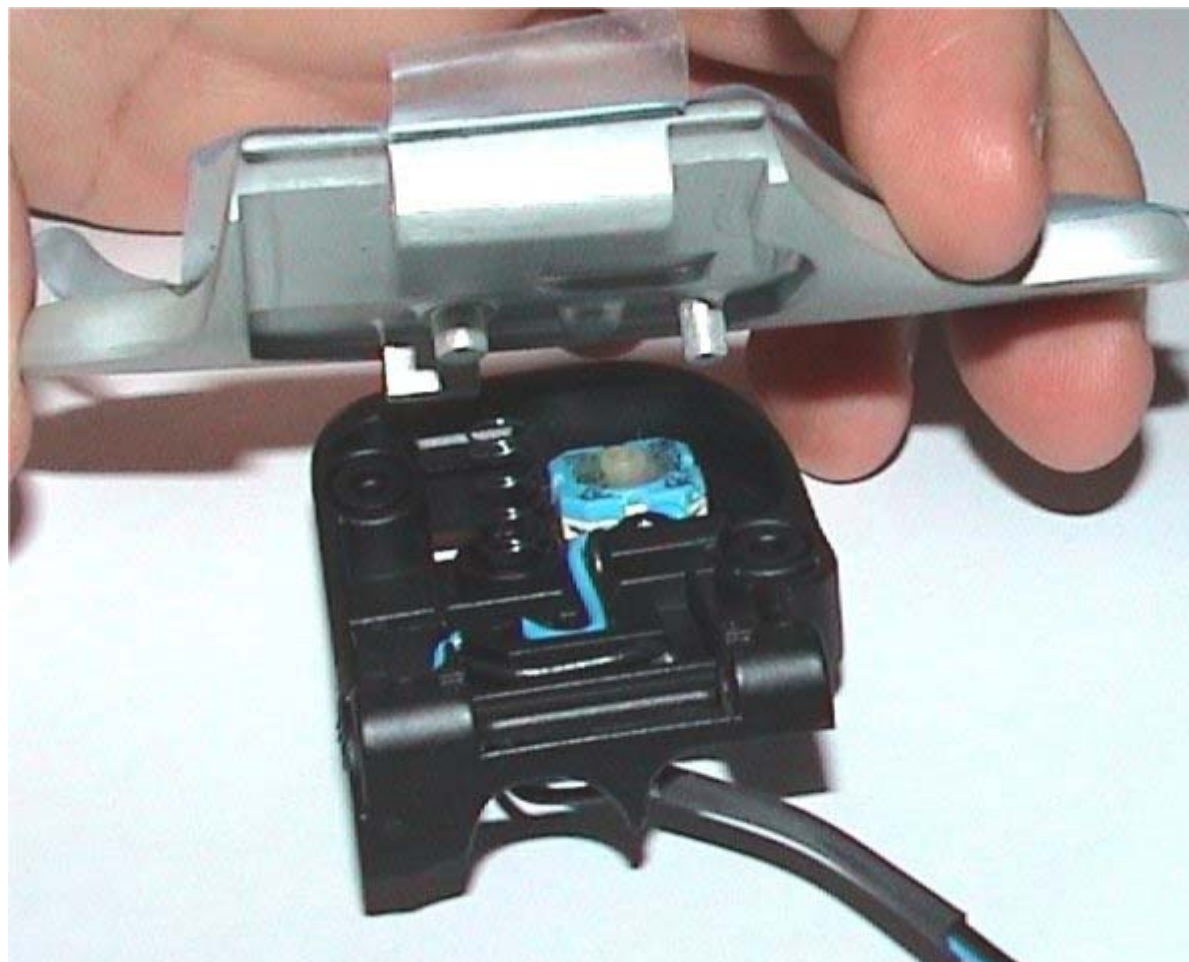


7. Carefully pull the paddle back from the switch, keeping in mind not to lose the spring:





8. Here is the spring fully released:



9. Now you can remove the paddle, by pulling up then out to release the "tab" or "lip" from the switch:





10. Here's the paddle fully separated from the switch:





11. Now go to your car, turn the steering wheel 180° so that it is upside down, and unscrew the plastic paddles:





12. Slowly push back the plastic paddles from the switches, keeping in mind that spring again:





13. Here's a comparison pic between the aluminium and plastic paddles:





14. Hold the aluminium paddle upside-down and place it behind the wheel:





15. Slide the aluminium paddle into the appropriate switch:



16. Screw the aluminium paddle in with the Torx screw, and adjust tightness for more or less "click":



17. Repeat for other paddle, and Voilà!!





18. View from the side:





19. A couple of ANT's pictures (hope you don't mind!):





Thanks again to all who contributed to this effort, and happy paddling!! ;D
Dean/ANT, if you have any comments about this "how to" please let me know :D

Take care
-Marc



2004 Yellow 3.2 TTC, Blue Leather seats, Premium Package, 17" All-Seasons, and lots of fun!
More pictures of this baby [HERE](#).

Also check out my [DSG FAQ](#) if you are interested in or own a 3.2 TT (V6).

[Back to top](#)



jam225
TT Forum Member



Joined: 24 Jun 2003
Posts: 146
Location: Scotland
Usergroups:

Posted: 25 Feb 2004 09:56 Post subject: Re: Installation Procedure of R32 Aluminium Paddle



Wow :o

The global interaction on this site never ceases to amaze me.

Hope you enjoy your paddles all you V6ers ;D

Denim 225 TTC

[Back to top](#)



Jac-in-a-Box

Posted: 25 Feb 2004 10:57 Post subject: Re: Installation Procedure of R32 Aluminium Paddle

